

# *i*CR7200 Dual Bay

True Flat Scan Path™



Computed Radiography Film Digitizers Teleradiology PACS

# iCR7200 Dual Bay

## Computed Radiography System

The iCR7200 Dual Bay's patented design incorporates a True Flat Scan Path™, an ultra precise scan mechanism and protective cassettes to produce over 300,000 high resolution images per plate.

The iCR7200 Dual Bay defines a whole new class in the arena of multi loader CR solutions. 2 separate CR reading modules allow for simultaneous scanning of 2 plates resulting in an ultra high throughput of up to 140 14x17 plates per hour. Both modules are based on the patented iCRco design incorporating the True Flat Scan Path™, an ultra precise scan mechanism, and protective cassettes to produce over 300,000 high resolution images per plate. iCRco imaging plates are fixed to a rigid back panel. Nothing ever touches the active area of the phosphor plate resulting in artifact free images throughout the lifetime of the plate.

Unlike most CR products, the iCR7200 Dual Bay uses no rollers to transport the plate across the 2 scan heads. A positive traction drive system ensures perfect artifact free reproduction with every scan.

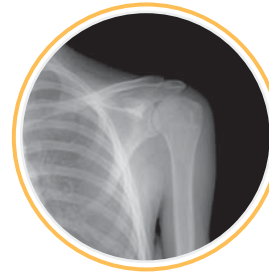
The iCR7200 Dual Bay has been designed to be deployed in Hospitals, Orthopedic facilities and in any other environment where ultra high throughput is needed. Enjoy the advantages of a multi loader system at the price of a single plate CR.



*Patented Design Technology*



*Ultra High Throughput*



*High Fidelity Images*

**iCRco technology** is the result of precision engineering which integrates electronic, optical and mechanical design.

This guarantees production of high quality digital imaging tools for the medical profession.





*iCR Flat Scan Path™  
IP Cassettes*

One Moving Part

Premium CR Solution

High Fidelity Images

140-180 Plates Per Hour

### Key Items

- Premium CR Solution
- 140-180 plates per hour
- True Flat Scan Path™
- Low Cost of Ownership
- Advanced Image Processing
- 12-month warranty on equipment and cassettes
- 3-year warranty on iCR imaging plates
- iCR QPC XSCAN32 Software
- iCR EDGE High Fidelity Multi Scale Image Processing
- Interactive and automatic Image Processing

- iCRco's full range of CR solutions are designed to grow and adapt to the evolving medical imaging environment.
- From image acquisition, ID and digitizing, to image quality control and processing, we offer everything you need for streamlined, effective workflow management.
- iCRco, Inc. manufactures the new iCR Intelligent Computed Radiography device and X-Ray Digitizing equipment with precision engineering integrating electronic, optical and mechanical designs.

### Learn More

For more information about iCRco Computed Radiography Systems, Film Digitizers and Software. Please visit [www.icrcompany.com](http://www.icrcompany.com).



[www.icrcompany.com](http://www.icrcompany.com)

**Grayscale Resolution:**

16 bits/pixel source file  
65000 Shades of Gray

**Automatic erasing**

**Automatic cassette handling**

**Dimensions:**

31W x 50H x 48L inches  
78.7W x 127H x 121.9L centimeters

**Weight:**

Approx. 165 lbs

**Power:**

100-240V AC/ 2.5A max; 47-63Hz

**Accepted Cassettes:**

35x43 cm (14x17 in.)  
24x30 cm (10x12 in.)  
18x24 cm (8x10 in.)

Odd plate sizes accepted and flexible plates scanned using Flex-scan cassette system (patent pending).

**Environmental Conditions:**

Temperature: 0-40°C/32-105°F  
Temperature change: 0.5°C/min  
Humidity: 15%-95% RH  
Magnetic Fields: max 1260 µT  
(in Conformance with EN 61000-4-8: Level 3), 10 A/m

**Heat Dissipation:**

Standby 230W  
Maximum 1610W

\* Specifications are subject to change without notice.

**Computer Configuration:**

Pentium 4 Class Device  
80GHD, 1GB RAM  
Windows 2000 or XP  
Modem, NIC Card, CDR-W  
USB 2 high speed interface

**Scan Time:**

180 Plates per hour mixed Cassette Sizes  
140 Plates per hour 14x17 Cassettes only  
40 second access time per bay  
52 seconds 14x17 at 200 Micron spot size

**Microns Dependent On:**

Processor Speed  
RAM Disk Access time  
Video Card

**Other Features:**

Integrated Eraser

Variable Erase Time Selectable

Scanning and Erasing in one step,  
Ultra High Throughput

1 Internal Moving Part

Precision Rack and Pinion Drive System

High Resolution and Standard Resolution  
Selectable Scanning Parameters

True Flat Scan Path™

No Plate Damage/Wear during Scan  
Process.

**U.S. and International patents granted  
Additional patents pending  
Medical CE compliant  
FDA Approved  
CE Approved**



20406 Earl Street, Torrance, CA 90503  
Phone: (310) 921-9559 Fax: (310) 921-2559  
Email: info@icrcompany.com  
Website: www.icrcompany.com

©2006 iCRco, Inc.