

# *i*CR3600SF

True Flat Scan Path™



Computed Radiography Film Digitizers Teleradiology PACS

# iCR3600SF

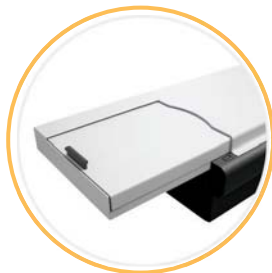
## Computed Radiography System

The iCR3600SF's patented design incorporates a true flat scan path™, an ultra precise scan mechanism, and protective cassettes to produce over 300,000 high resolution images per plate.

iCRco imaging plates are fixed to a rigid back panel. Nothing ever touches the active area of the phosphor plate resulting in an artifact free image. Unlike most CR products, the iCR3600SF uses no rollers to transport the plate across the scan head. A positive traction drive system ensures perfect artifact free reproduction.

The iCR3600SF has been designed for small format applications as well as to complement existing CR installations. Its 90 plates per hour throughput makes it ideal for medium to high volume environments.

The iCR3600SF's small footprint makes it a perfect fit for small spaces or installation inside the X-Ray room for maximum productivity.



Patented Design Technology



True Flat Scan Path

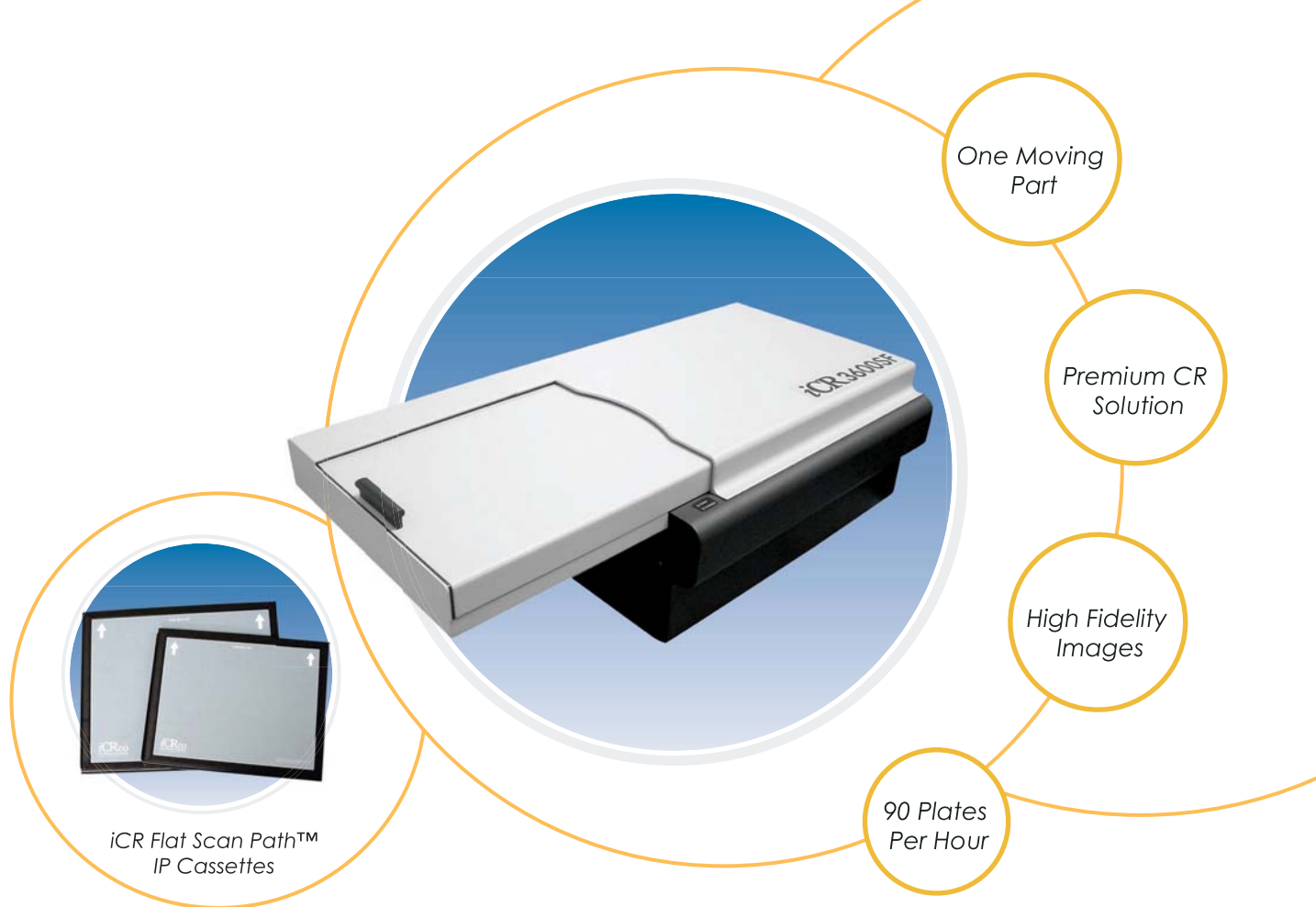


High Fidelity Images

**iCR technology** is the result of precision engineering which integrates electronic, optical and mechanical design.

This guarantees production of high quality digital imaging tools for the medical profession.





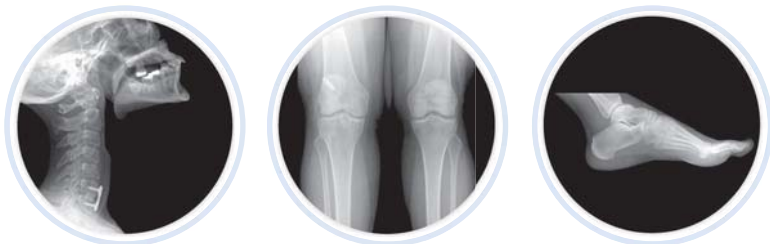
## Key Items

- Premium CR Solution
- 90 plates per hour
- True Flat Scan Path™
- Low Cost of Ownership
- Advanced Image Processing
- 12-month warranty on equipment and cassettes
- 3-year warranty on iCR imaging plates
- iCR QPC XSCAN32 Software
- iCR EDGE High Fidelity Multi Scale Image Processing
- Interactive and automatic Image Processing

## Learn More

For more information about iCRco Computed Radiography Systems, Film Digitizers and Software. Please visit [www.icrcompany.com](http://www.icrcompany.com).

- iCRco's full range of CR solutions are designed to grow and adapt to the evolving medical imaging environment.
- From image acquisition, ID and digitizing, to image quality control and processing, we offer everything you need for streamlined, effective workflow management.
- iCRco, Inc. manufactures the new iCR Intelligent Computed Radiography device and X-Ray Digitizing equipment with precision engineering integrating electronic, optical and mechanical designs.



[www.icrcompany.com](http://www.icrcompany.com)

**Grayscale Resolution:**

16 bits/pixel source file  
65000 Shades of Gray

**Spatial Resolution:**

10"x12" 5 Line Pairs/mm

**Dimensions:**

18.5W x 10H x 34L inches  
47W x 25.4H x 86.4L centimeters

**Weight:**

Approx. 42 lbs

**Power:**

100-240V AC/ 2.5A max; 47-63Hz

**Accepted Cassettes:**

24x30 cm (10x12 in.)  
18x24 cm (8x10 in.)

**Environmental Conditions:**

Temperature; 0-40°C/32-105°F  
Temperature change: 0.5°C/min  
Humidity: 15%-95% RH  
Magnetic Fields: max 1260 µT  
(in Conformance with EN 61000-4-8:  
Level 3), 10 A/m

**Resolution Selections:**

200 to 100 micron sample size  
Selectable in increments of 10

**Computer Configuration:**

Pentium 4 Class Device  
80GHD, 1GB RAM  
Windows 2000 or XP  
Modem, NIC Card, CDR-W  
USB 2 high speed interface



20406 Earl Street, Torrance, CA 90503  
Phone: (310) 921-9559 Fax: (310) 921-2559  
Email: info@icrcompany.com  
Website: www.icrcompany.com

©2006 iCRco, Inc.

**Scan Time:**

50 plates per hour  
(200 micron pixels) 10X12 cassettes  
90 plates per hour  
(200 micron pixels) 8X10 cassettes

**Other Features:**

Integrated Eraser

Variable Erase Time Selectable

Scanning and Erasing in one step,  
Ultra High Throughput

1 Internal Moving Part

Precision Rack and Pinion Drive System

High Resolution and Standard Resolution  
Selectable Scanning Parameters

True Flat Scan Path™

No Plate Damage/Wear during Scan  
Process.

**U.S. and International patents granted**  
**Additional patents pending**  
**Medical CE compliant**  
**FDA Approved**  
**CE Approved**

\* Specifications are subject to change without notice.